

# BANDMASTER

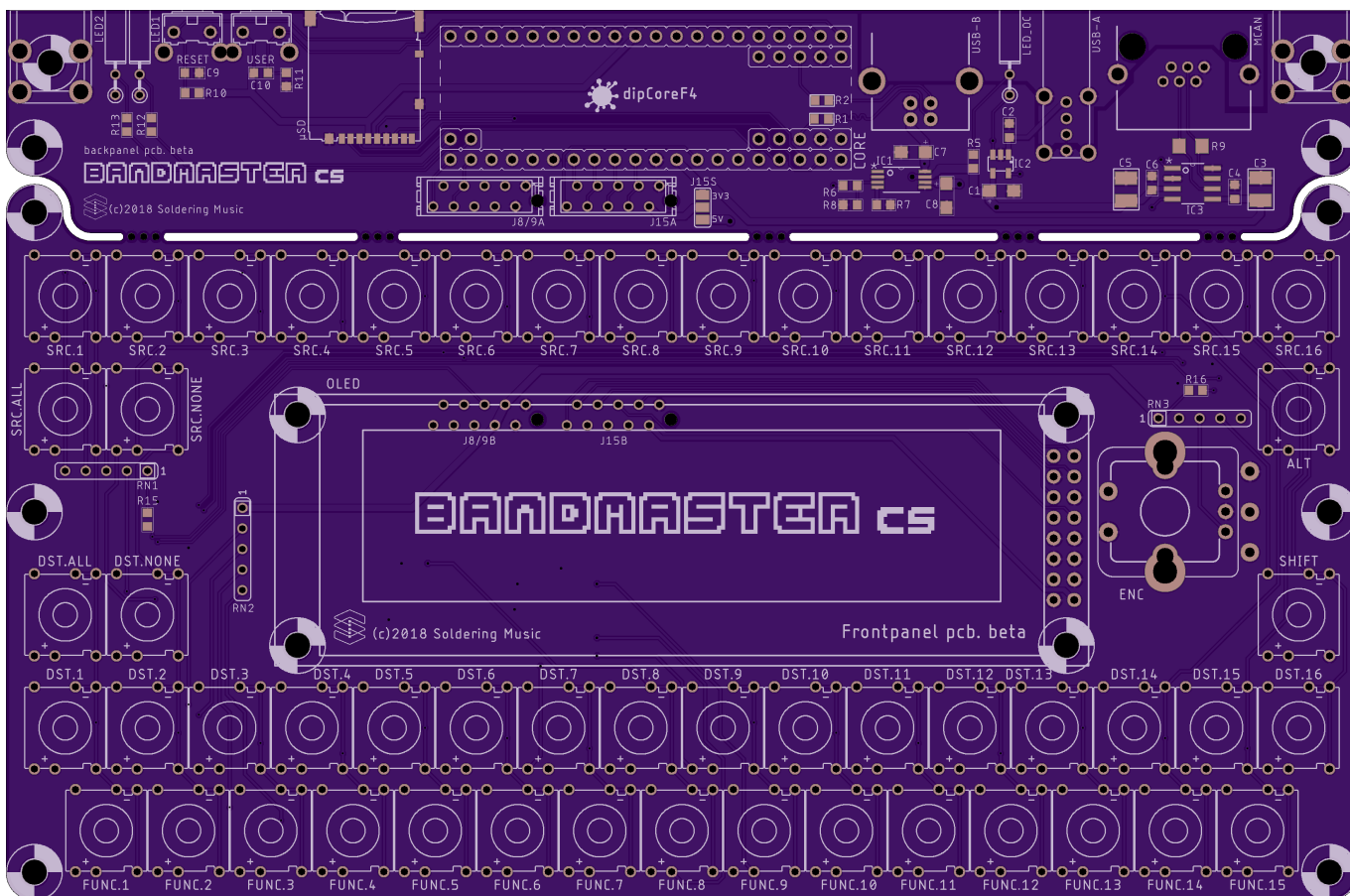
## MIDI Routing System and Control Surface.

Scalable MIDI Routing application using the MCAN and the M16 Interface...

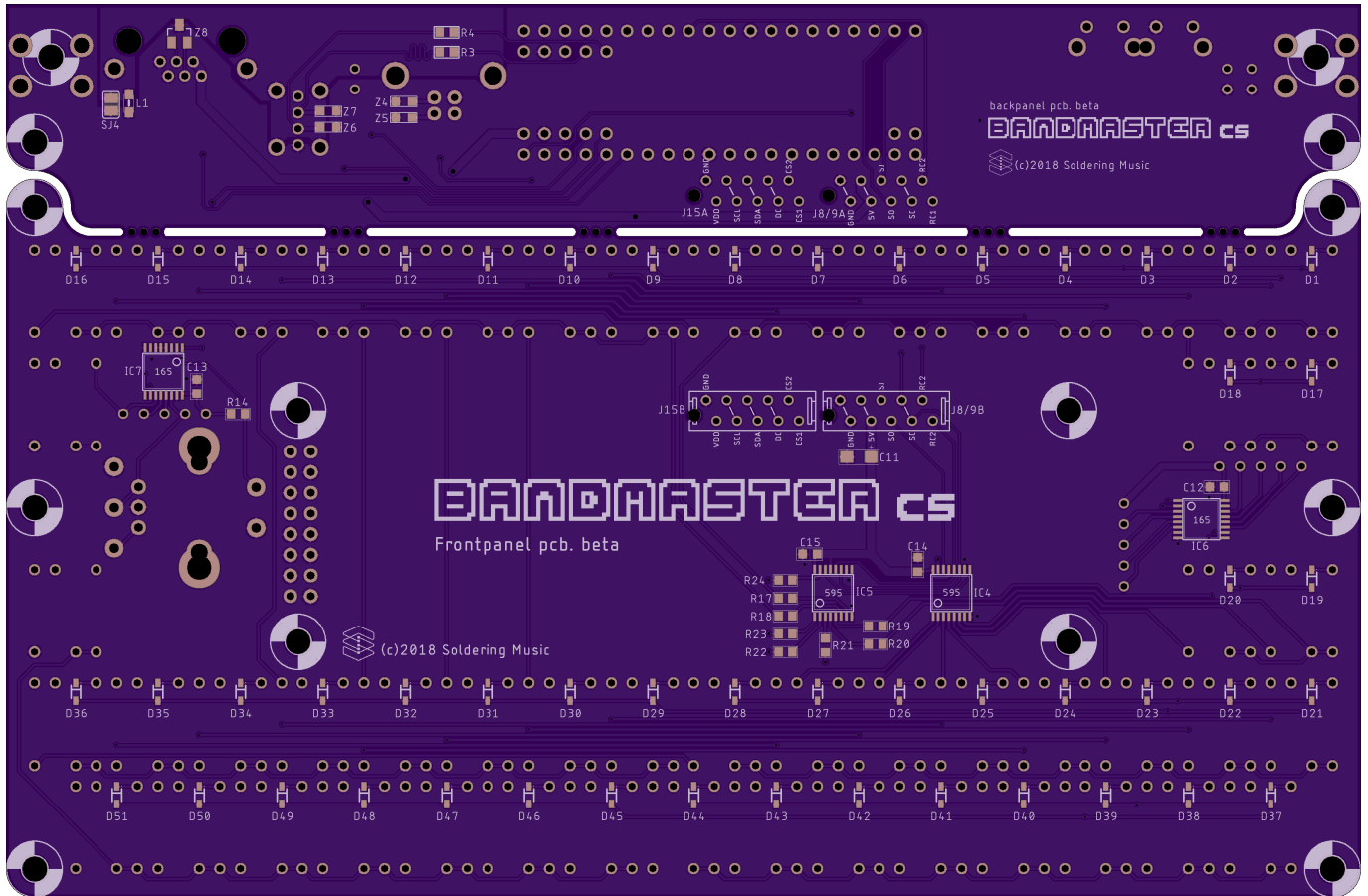
### Bandmaster CS

The Remote Control.

### Top



### Bottom



## BOM

Mouser BOM version 1. [to complete](#)

Qty	Value	Package	Parts	Mouser	Reichelt	Conrad	Other	Notes
<b>Resistors</b>								
4	22R 5%	0603	R1, R2, R3, R4	<a href="#">667-ERJ-PA3J220V</a>				
1	120R 1%	1206	R9	<a href="#">71-CRCW1206120RFKEAC</a>				
8	220R 5%	0603	R17, R18, R19, R20, R21, R22, R23, R24	<a href="#">755-ESR03EZPJ221</a>				
1	470R 5%	0603	R7	<a href="#">755-ESR03EZPJ471</a>				
3	680R 5%	0603	R5, R12, R13	<a href="#">667-ERJ-PA3J681V</a>				Depends on Led
5	10K 5%	0603	R6, R8, R14, R15, R16	<a href="#">755-ESR03EZPJ103</a>				
2	100K 5%	0603	R10, R11	<a href="#">755-ESR03EZPJ104</a>				
<b>Resistors Network</b>								
3	10K 5%	DIL5	RN1, RN2, RN3	<a href="#">858-L051S103LF</a>				
<b>Capacitors</b>								
9	100n	0603	C2, C4, C6, C9, C10, C12, C13, C14, C15	<a href="#">710-885012206071</a>				

Qty	Value	Package	Parts	Mouser	Reichelt	Conrad	Other	Notes
<b>Resistors</b>								
2	1u	1210	C3, C5	<a href="#">710-885012209047</a>				
4	4,7u Tantalum	SMC_A(1206)	C1, C7, C8, C11	<a href="#">647-F931C475MAA</a>				
<b>ESD Suppressors / TVS Diodes</b>								
4	CG0603MLC-05E	0603	Z1, Z2, Z3, Z4	<a href="#">652-CG0603MLC-05E</a>				
1	PESD1CAN	SOT23	Z5	<a href="#">771-PESD1CAN-T/R</a>				
<b>Ferrite Bead</b>								
1	BLM21	0805	L1	<a href="#">81-BLM21P331SG</a>				
<b>Diodes</b>								
51	1N4148WS	SOD323-W	D1, D2, D3, D4, D5, D6, D7, D8, D9, D10, D11, D12, D13, D14, D15, D16, D17, D18, D19, D20, D21, D22, D23, D24, D25, D26, D27, D28, D29, D30, D31, D32, D33, D34, D35, D36, D37, D38, D39, D40, D41, D42, D43, D44, D45, D46, D47, D48, D49, D50, D51	<a href="#">512-1N4148WS</a>				Only if you use CAN without transceiver
<b>LEDs</b>								
3	-	THT	LED1, LED2, LED_OC					2x5mm rectangular THT
<b>OLED Screen</b>								
1	ER-OLEDM032-1W		OLED	<a href="#">ER-OLEDM032-1W</a>				buydisplay SSD1322
<b>IC</b>								
1	TPS2113APWR	SOT23-5L	IC1	<a href="#">595-TPS2113APWR</a>				Power Switch IC
1	STMPS2161STR	SOT23-5L	IC2	<a href="#">511-STMPS2161STR</a>				Power Switch IC
1	TCAN1042GV	SOIC8	IC3	<a href="#">595-TCAN1042GVDRQ1</a>				CAN tranceiver
2	74HC595	TSSOP-16	IC4, IC5	<a href="#">595-SN74HC595PWR</a>				
2	74HC165	TSSOP-16	IC6, IC7	<a href="#">595-SN74HC165PWR</a>				
<b>Switches and Encoder</b>								
2	B3F-31xx	-	USER, RESET	<a href="#">653-B3F-3122</a>				

Qty	Value	Package	Parts	Mouser	Reichelt	Conrad	Other	Notes
<b>Resistors</b>								
53	MEC_5GTH or MEC_3FTH	-	ALT, DST.1, DST.2, DST.3, DST.4, DST.5, DST.6, DST.7, DST.8, DST.9, DST.10, DST.11, DST.12, DST.13, DST.14, DST.15, DST.16, DST.ALL, DST.NONE, FUNC.1, FUNC.2, FUNC.3, FUNC.4, FUNC.5, FUNC.6, FUNC.7, FUNC.8, FUNC.9, FUNC.10, FUNC.11, FUNC.12, FUNC.13, FUNC.14, FUNC.15, SHIFT, SRC.1, SRC.2, SRC.3, SRC.4, SRC.5, SRC.6, SRC.7, SRC.8, SRC.9, SRC.10, SRC.11, SRC.12, SRC.13, SRC.14, SRC.15, SRC.16, SRC.ALL, SRC.NONE	<a href="#">642-5GTH92061</a> or <a href="#">642-3FTH9Q</a>				+ 3mm leds for 3FTH
1	PEC12R	-	ENC	<a href="#">652-PEC12R-4217F-S24</a>				
<b>Connectors</b>								
1	USB-B	THT	USB-B	<a href="#">538-67068-8000</a>				
1	USB-A	THT	USB-A	<a href="#">538-48204-0001</a>				
1	RJE0166201	single RJ11 6p6c	MCAN	<a href="#">523-RJE01-662-01</a>				

Qty	Value	Package	Parts	Mouser	Reichelt	Conrad	Other	Notes
<b>Resistors</b>								
2	micro-match 2x5	Female	J8/9A, J15A	<a href="#">571-12150790</a> or <a href="#">571-1-2178710-0</a> (value line)				
2	micro-match 2x5	IDC	J8/9B, J15B	<a href="#">571-8-215570-0</a>				Paddle board
1	DM3AT-SF-PEJM5	Socket	micro-SD	<a href="#">571-8-215079-4</a>				with push-push
<b>Others</b>								
2	Screw terminal	-	-	<a href="#">534-7790</a>				

ToDo

From: <https://midibox.org/dokuwiki/> - **MIDIbox**

Permanent link: <https://midibox.org/dokuwiki/doku.php?id=bandmaster&rev=1538913462>

Last update: **2018/10/07 11:57**

