

BANDMASTER

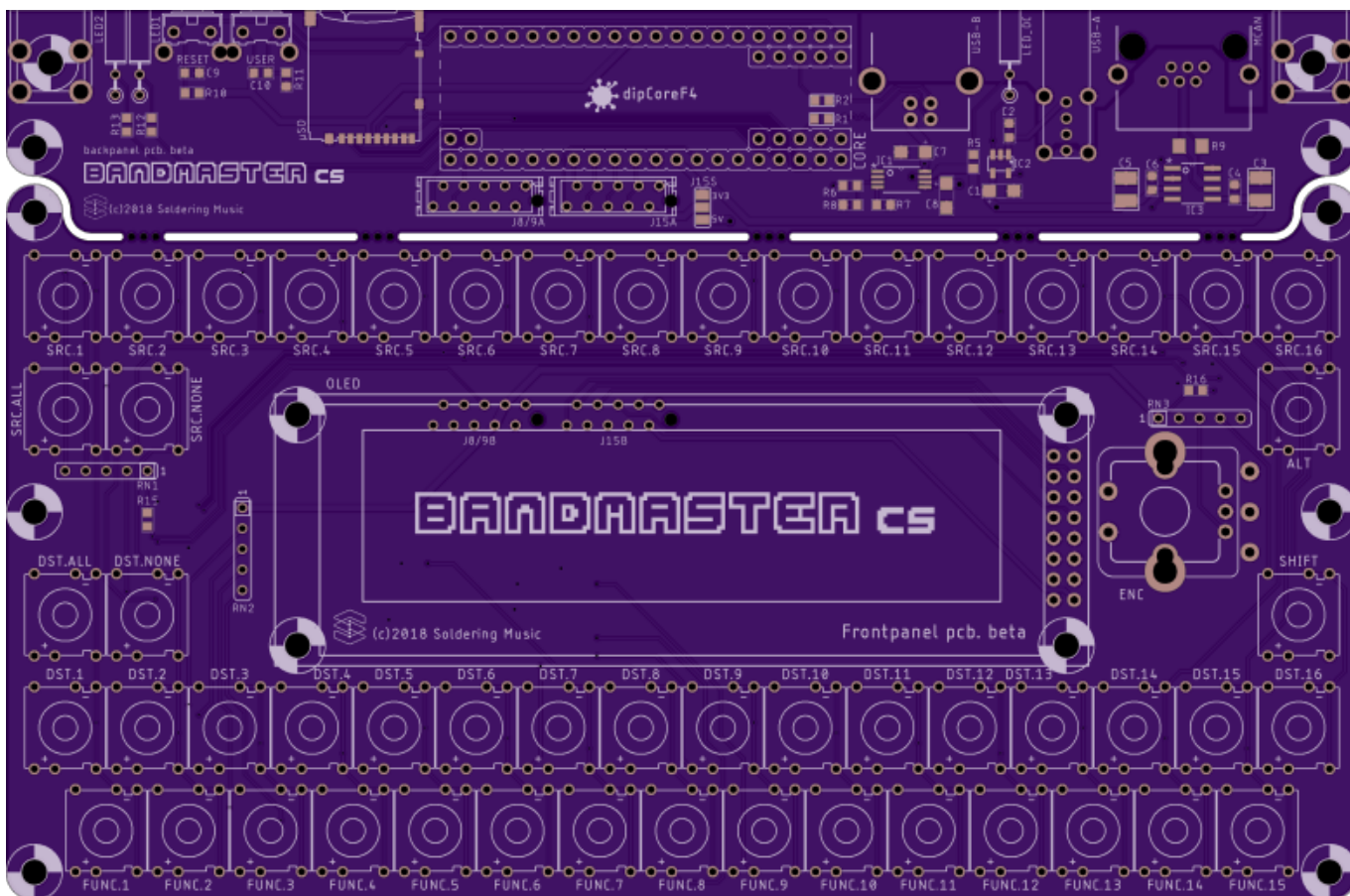
MIDI Routing System and Control Surface.

Scalable MIDI Routing application using the MCAN and the M16 Interface...

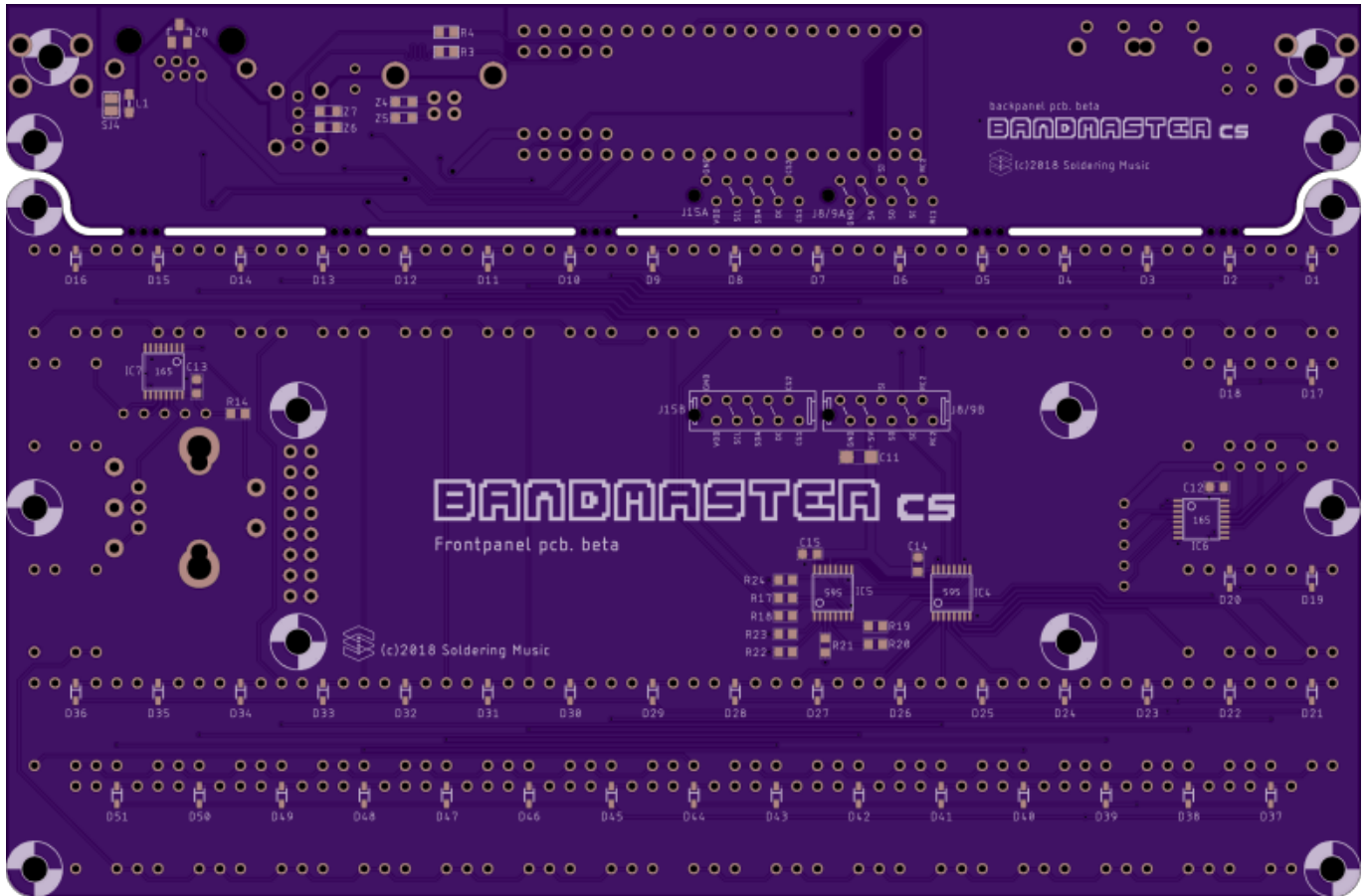
Bandmaster CS

The Remote Control.

Top



Bottom



BOM

Mouser BOM version 1. [to complete](#)

Qty/Value	Package	Parts	Mouser	Reichelt/Conrad/Other	Notes
Resistors					
4	22R 5%	R1, R2, R3, R4	667-ERJ-PA3J220V		
1	120R 1%	R9	71-CRCW1206120RFKEAC		
8	220R 5%	R17, R18, R19, R20, R21, R22, R23, R24	755-ESR03EZPJ221		
1	470R 5%	R7	755-ESR03EZPJ471		
3	680R 5%	R5, R12, R13	667-ERJ-PA3J681V		Depends on Led
5	10K 5%	R6, R8, R14, R15, R16	755-ESR03EZPJ103		
2	100K 5%	R10, R11	755-ESR03EZPJ104		
Resistors Network					
3	10K 5%	RN1, RN2, RN3	858-L051S103LF		
Capacitors					
9	100n	C2, C4, C6, C9, C10, C12, C13, C14, C15	710-885012206071		
2	1u	C3, C5	710-885012209047		
4	4,7u Tantalum	C1, C7, C8, C11	647-F931C475MAA		
ESD Suppressors / TVS Diodes					
4	CG0603MLC-05E	Z1, Z2, Z3, Z4	652-CG0603MLC-05E		
1	PESD1CAN	Z5	771-PESD1CAN-T/R		
Ferrite Bead					
1	BLM21	L1	81-BLM21P331SG		
Diodes					

Qty	Value	Package	Parts	Mouser	Reichelt	Conrad	Other	Notes
Resistors								
51	1N4148WS	SOD323-W	D1, D2, D3, D4, D5, D6, D7, D8, D9, D10, D11, D12, D13, D14, D15, D16, D17, D18, D19, D20, D21, D22, D23, D24, D25, D26, D27, D28, D29, D30, D31, D32, D33, D34, D35, D36, D37, D38, D39, D40, D41, D42, D43, D44, D45, D46, D47, D48, D49, D50, D51	512-1N4148WS				Only if you use CAN without transceiver
LEDs								
3	-	THT	LED1, LED2, LED_OC					2x5mm rectangular THT
OLED Screen								
1	ER-OLEDM032-1W		OLED	ER-OLEDM032-1W				buydisplay SSD1322
IC								
1	TPS2113APWR	SOT23-5L	IC1	595-TPS2113APWR				Power Switch IC
1	STMP52161STR	SOT23-5L	IC2	511-STMP52161STR				Power Switch IC
1	TCAN1042GV	SOIC8	IC3	595-TCAN1042GVDRQ1				CAN transceiver
2	74HC595	TSSOP-16	IC4, IC5	595-SN74HC595PWR				
2	74HC165	TSSOP-16	IC6, IC7	595-SN74HC165PWR				
Switches and Encoder								
2	B3F-31xx	-	USER, RESET	653-B3F-3122				
53	MEC_5GTH or MEC_3FTH	-	ALT, DST.1, DST.2, DST.3, DST.4, DST.5, DST.6, DST.7, DST.8, DST.9, DST.10, DST.11, DST.12, DST.13, DST.14, DST.15, DST.16, DST.ALL, DST.NONE, FUNC.1, FUNC.2, FUNC.3, FUNC.4, FUNC.5, FUNC.6, FUNC.7, FUNC.8, FUNC.9, FUNC.10, FUNC.11, FUNC.12, FUNC.13, FUNC.14, FUNC.15, SHIFT, SRC.1, SRC.2, SRC.3, SRC.4, SRC.5, SRC.6, SRC.7, SRC.8, SRC.9, SRC.10, SRC.11, SRC.12, SRC.13, SRC.14, SRC.15, SRC.16, SRC.ALL, SRC.NONE	642-5GTH92061 or 642-3FTH9Q				+ 3mm leds for 3FTH
1	PEC12R	-	ENC	652-PEC12R-4217F-S24				
Connectors								
1	USB-B	THT	USB-B	538-67068-8000				
1	USB-A	THT	USB-A	538-48204-0001				
1	RJE0166201	single RJ11 6p6c	MCAN	523-RJE01-662-01				
2	micro-match 2x5	Female	J8/9A, J15A	https://www.mouser.fr/ProductDetail/TE-Connectivity-AMP/1-215079-0?qs=sGAEpiMZZMvIX3nhDDO4AD0YxAKLygYct7VkiBsEv0l%3d				

571-12150790]] or 571-1-2178710-0(value line) |||||

2	micro-match 2x5	IDC	J8/9B, J15B	571-8-215570-0		Paddle board
---	-----------------	-----	-------------	----------------	--	--------------

1	DM3AT-SF-PEJM5	Socket	micro-SD	571-8-215079-4		with push-push
Others						
2	Screw terminal	-	-	534-7790		

ToDo

From:
<https://midibox.org/dokuwiki/> - **MIDIbox**

Permanent link:
<https://midibox.org/dokuwiki/doku.php?id=bandmaster&rev=1538986764>

Last update: **2018/10/08 08:19**

