

# Display Driver - Board - for 18 SSD1306 Screens



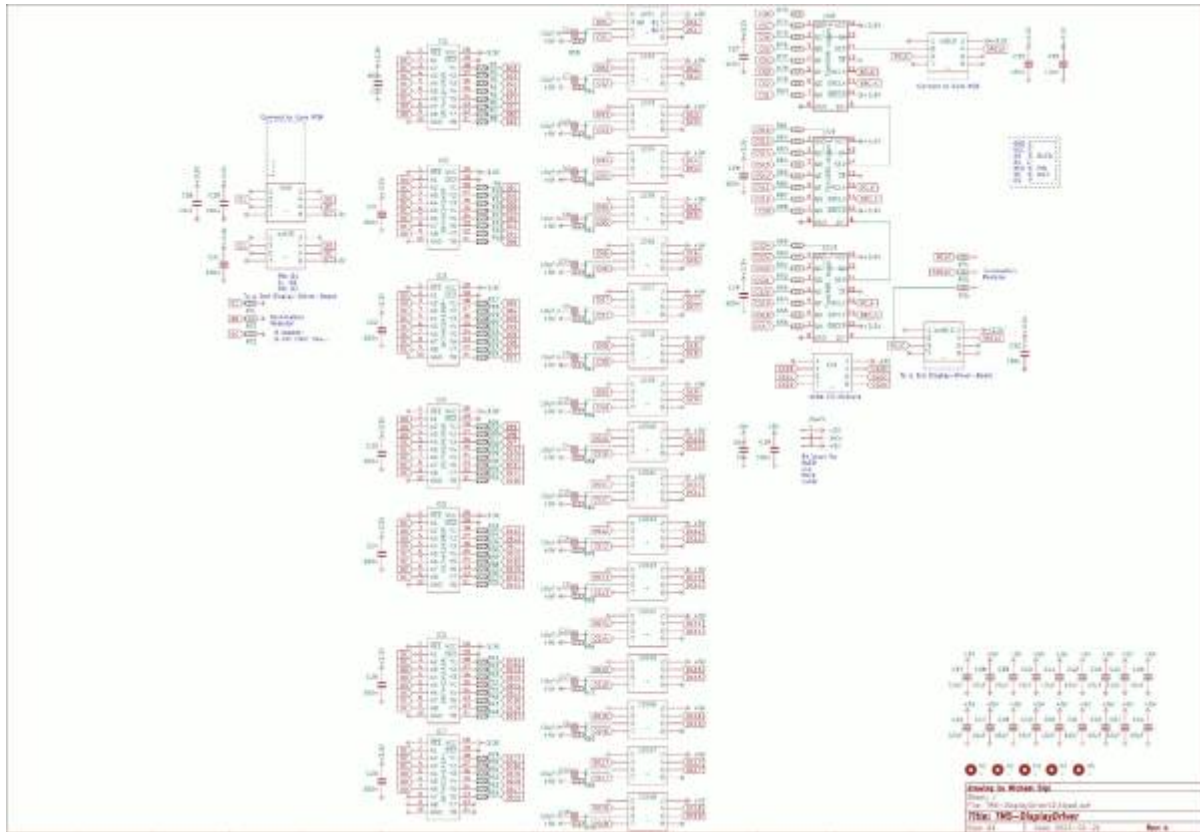


this is one essential part for my [triggermatrix5](#)

I need there 17 Displays, and i had good experiance with andys [display\\_driver](#)-board since i didnt want to solder this board by hand again - i created this board. its fully SMD, and made it pick and place ready - so no soldering required!

## Schematic

[display-driver-smd-schematic.pdf](#)



# Building and BOM

Its build by pick and place robots... so no need to build

## BOM

Qty	Reference	Value	Footprint	Mouser
1	Midi1	Pin-Head-2x4	PinHead-Shrd-2x4-THT	649-75869-232LF
4	Midi-IN1-2, Midi-OUT1-2	Din 5Pole	KCDX5SS2	806-KCDX-5S-S2
2	R1, R2	220	THT or 1206	SMD: 660-RK73B2BTDD221J THT: 281-220-RC



## To Do

waiting for the assembled Prototype

## Community users working on it

- [Phatline](#) = PCB & Schematic, UI-Programming, Documentation...

Just let a Private message on the forum to user already involved.  
or join the forum: [Triggermatrix 5](#)

From:

<https://midibox.org/dokuwiki/> - **MIDIbox**

Permanent link:

<https://midibox.org/dokuwiki/doku.php?id=displaydriver-smd&rev=1671987508>

Last update: **2022/12/25 16:58**

