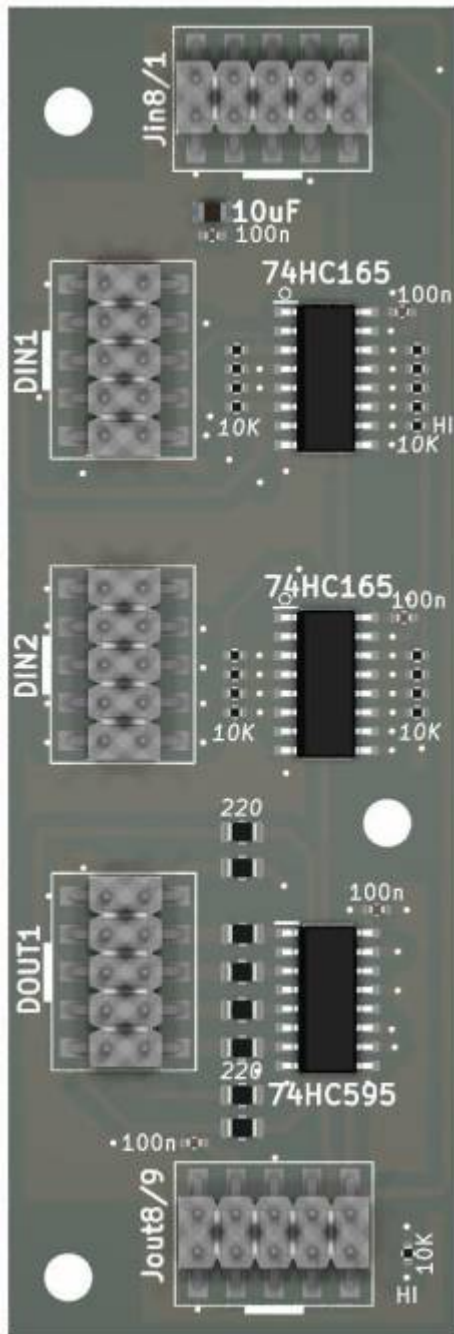
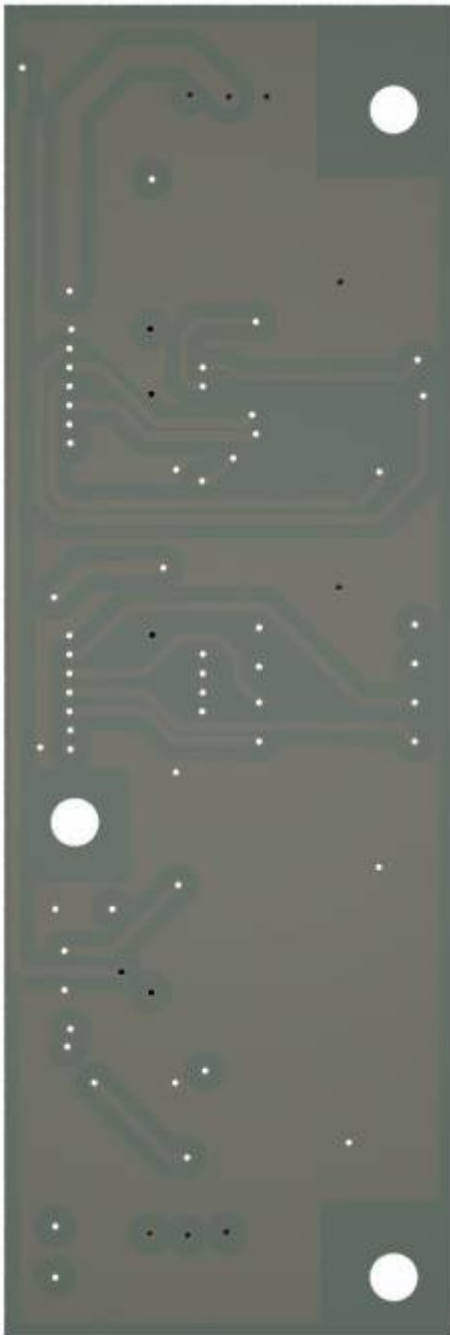


# DinX2DoutX1





**it gives;**

16 Digital Inputs

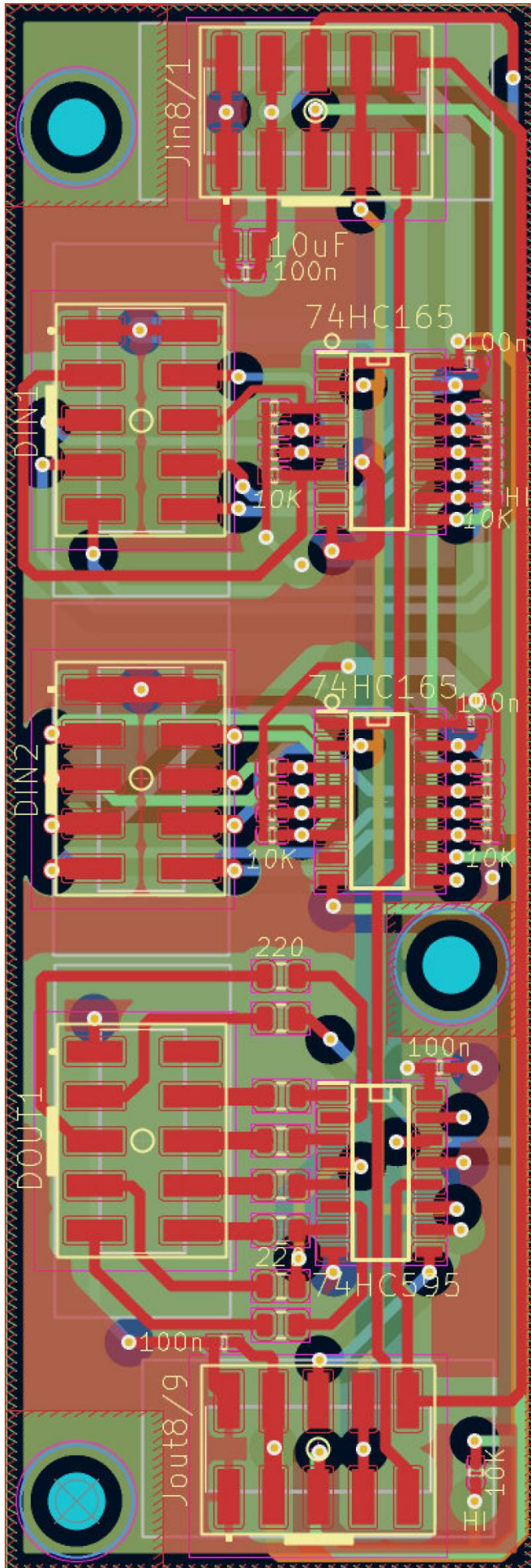
8 Digital Outputs

The Board is fully SMD, and made for pick and place - so no soldering required!

## Schematic







# To Do

waiting for the assembled Prototype

## Community users working on it

- **Phatline** = PCB & Schematic, UI-Programming, Documentation...

Just let a Private message on the forum to user already involved.

or join the forum: [Triggermatrix 5](#)

From:  
<https://midibox.org/dokuwiki/> - **MIDIbox**

Permanent link:  
<https://midibox.org/dokuwiki/doku.php?id=doutx2dinx1&rev=1673226387>

Last update: **2023/01/09 01:06**

