

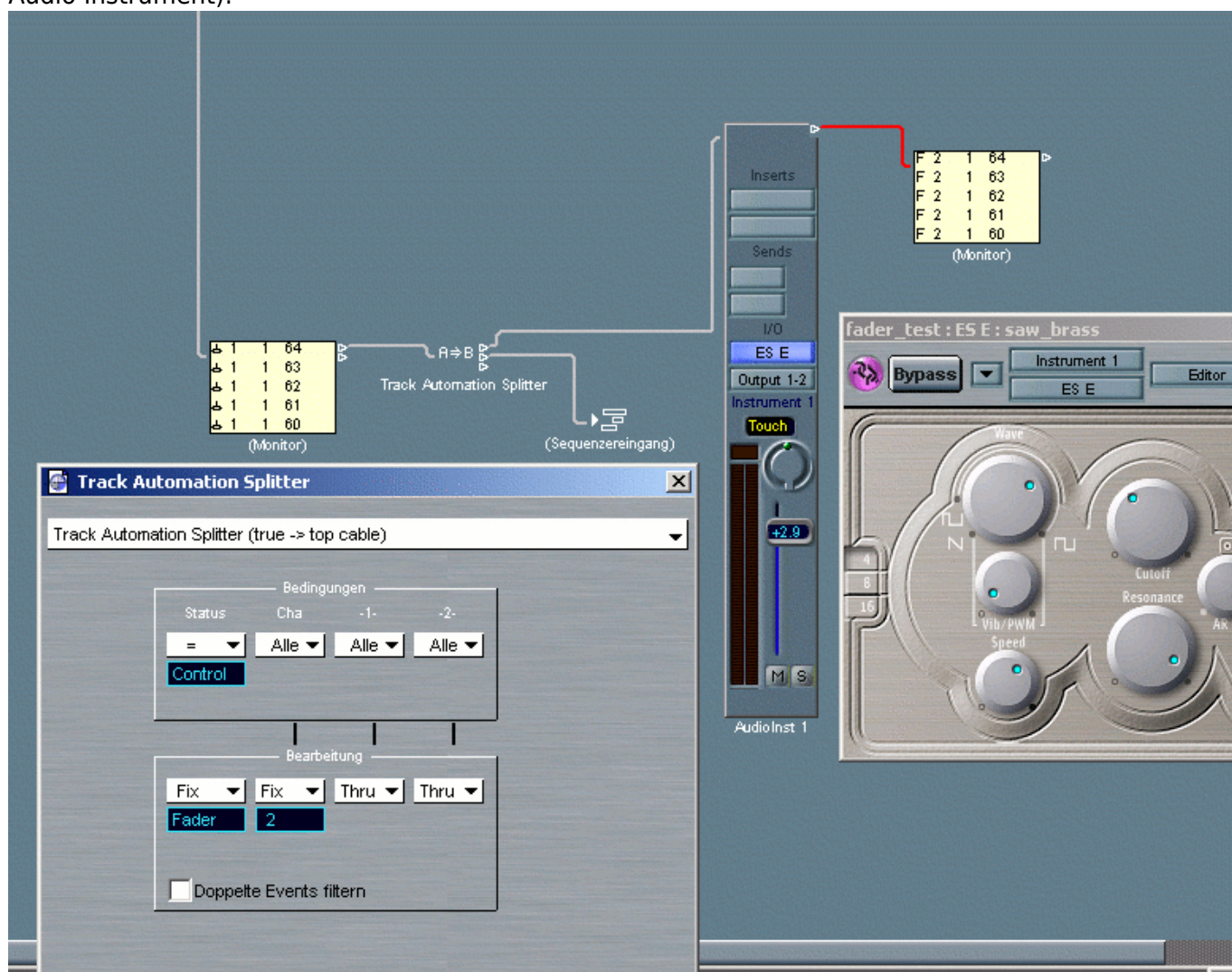
Logic Control Emulation

The best solution for Logic users is the use of Logic Control - the emulation is called [MIDIboxLC](#)

Environment tinkering

You can also route MIDI events which are sent by any MIDIbox controller like MIDIbox64/MIDIbox64E/MIDI0128 directly to any object (MIDI/Audio) by using Fader events.

Add a Track Automation Splitter between the transmitter (here: MIDIbox) and the object (here: an Audio Instrument):



This has the advantage that incoming data will be automatically taken by the automation (don't forget to activate the touch mode)



From: <https://midibox.org/dokuwiki/> - **MIDIbox**

Permanent link: <https://midibox.org/dokuwiki/doku.php?id=logic&rev=1142525271>

Last update: **2006/10/15 09:35**

