

LRE8x2 096 SSD1306-BAR for Eurorack



Eurorackpanel;
 LRE-OLED-BAR & LRE8x2 V2.5 This Design is planned for SMD-LEDs - and Screens, - it only will work for transparent Plates - else it must be adaptet (mor drill holes) designed by Michael Sigl > www.siglut.at



4x PCBs on one 100x100mm

there is no V-Groove, you have to cut it on the marking groove it on top and back, with a new sharp cutter, do it several times, then break it



With this Method you pay for 20 PCBs 8€ all inclusive to EU-Austria
So you can Stuff 5 LRE8x2 with this.

Hardware Requirements

- a MIOS32 Core to connect too
- Soldering Iron - with a Dip that can Handle Thruhole-Parts, solder Paste...
- LRE8x2 for its nature use

Schematic



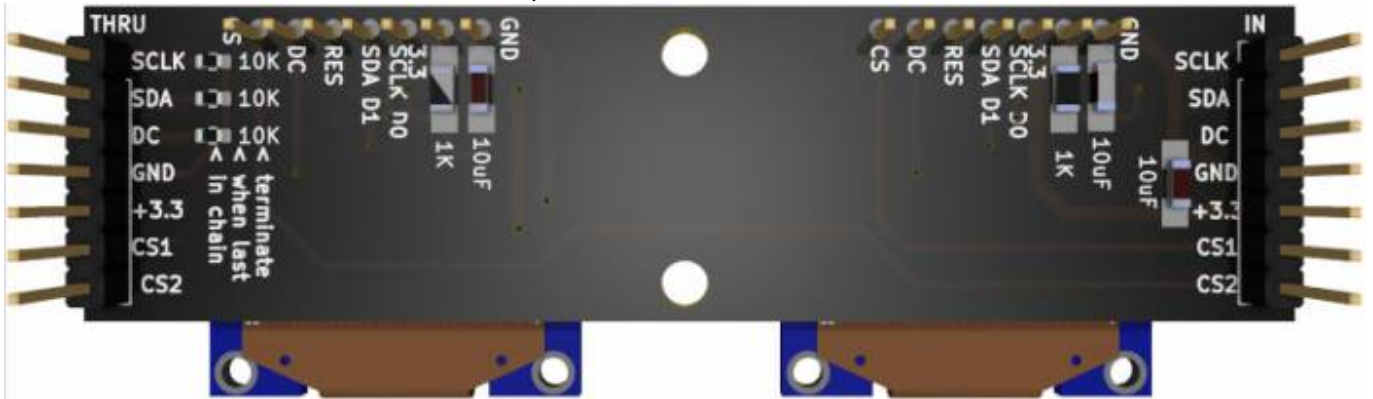
Full Schematic:
[lre-oled-bar-schematic.pdf](#)

Building

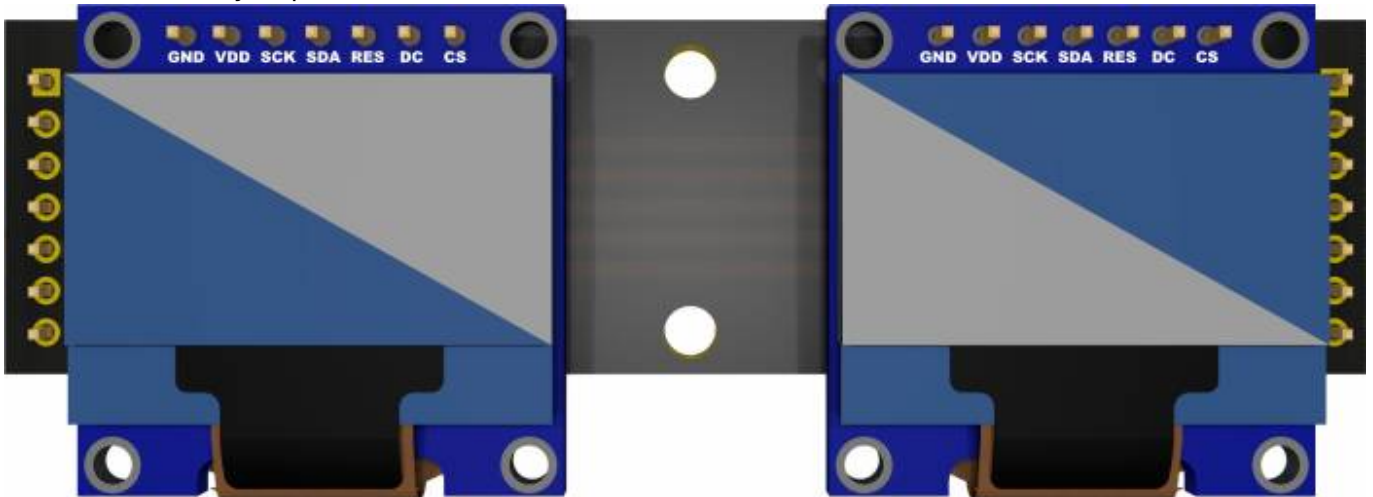
There are 1Row 7Pin headers (2.54mm pitch) on the Backside of the PCB

The Values are printet on the PCB. Following Quantity is for 4 PCBs:

- 8x 1K 1208 SMD Resistors
- 12x 10uF 1208 Capacitors (non polarized)
- 8x 0.96" SSD1306 Screens
- 3x 10K 0603 SMD Resistors which are optional



On the Frontside you put in the Screens



BOM LCSC

these are the parts which must be handsoldered

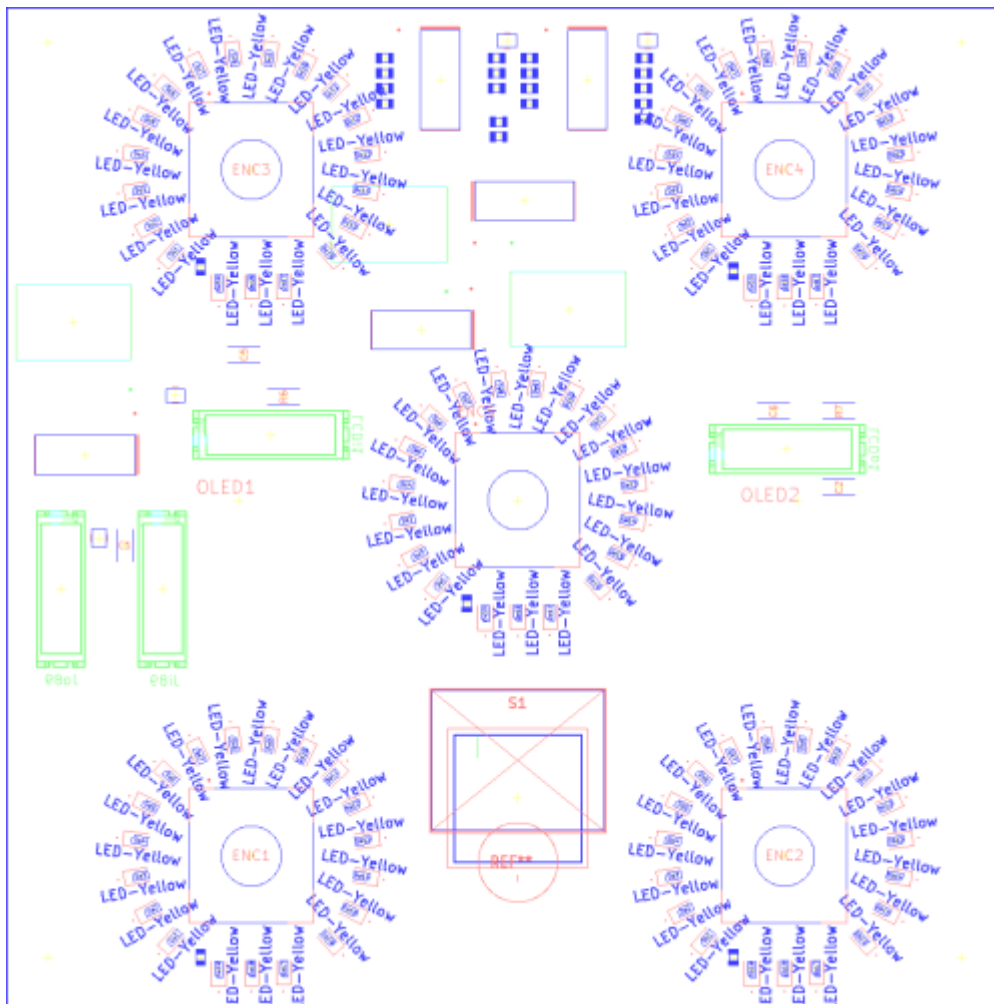
| Comment | Designator | Footprint | LCSC Part Number | Lot |
|------------------|-----------------------|----------------|------------------|-----|
| ULN2003ADRW | Q1-Q3 | SOIC-18_300mil | C9683 | 3 |
| PEC11R-4015F-S24 | ENC1-ENC5 | tht | C143789 | 5 |
| Micromatch-2x5 | LCDi1,LCDo1,Ji89,Jo89 | tht | C590954 | 4 |
| Switch | S1 | tht | C273513 | 1 |

S1 can be stuffed with: Matias, CherryMX, MEC-3FTH9, TL1265

BOM AliExpress

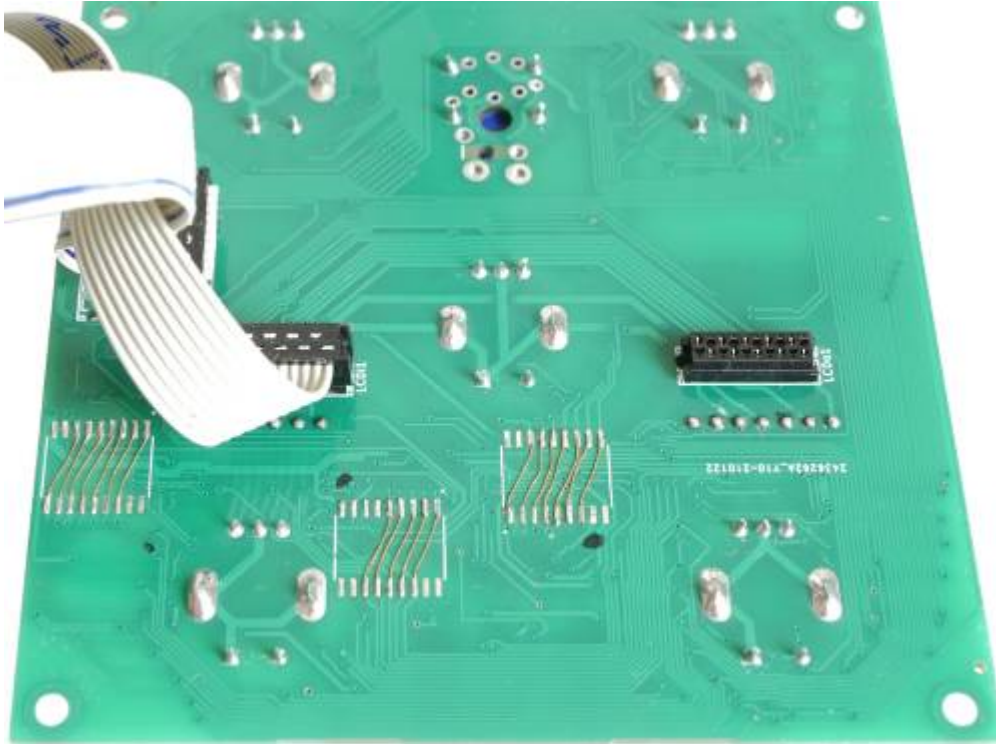
[2xSSD1306-7Pin](#)

PART Locations



To Do

making Revision 2, because in 1 the Transistor-Array-Fottprint is wrong and had to bridged



Community users working on it

- **Phatline** = PCB & Schematic, UI-Programming, Documentation...

Just let a Private message on the forum to user already involved.

From:

<https://midibox.org/dokuwiki/> - **MIDIbox**

Permanent link:

<https://midibox.org/dokuwiki/doku.php?id=lre-oled-bar&rev=1642043461>

Last update: **2022/01/13 03:11**

