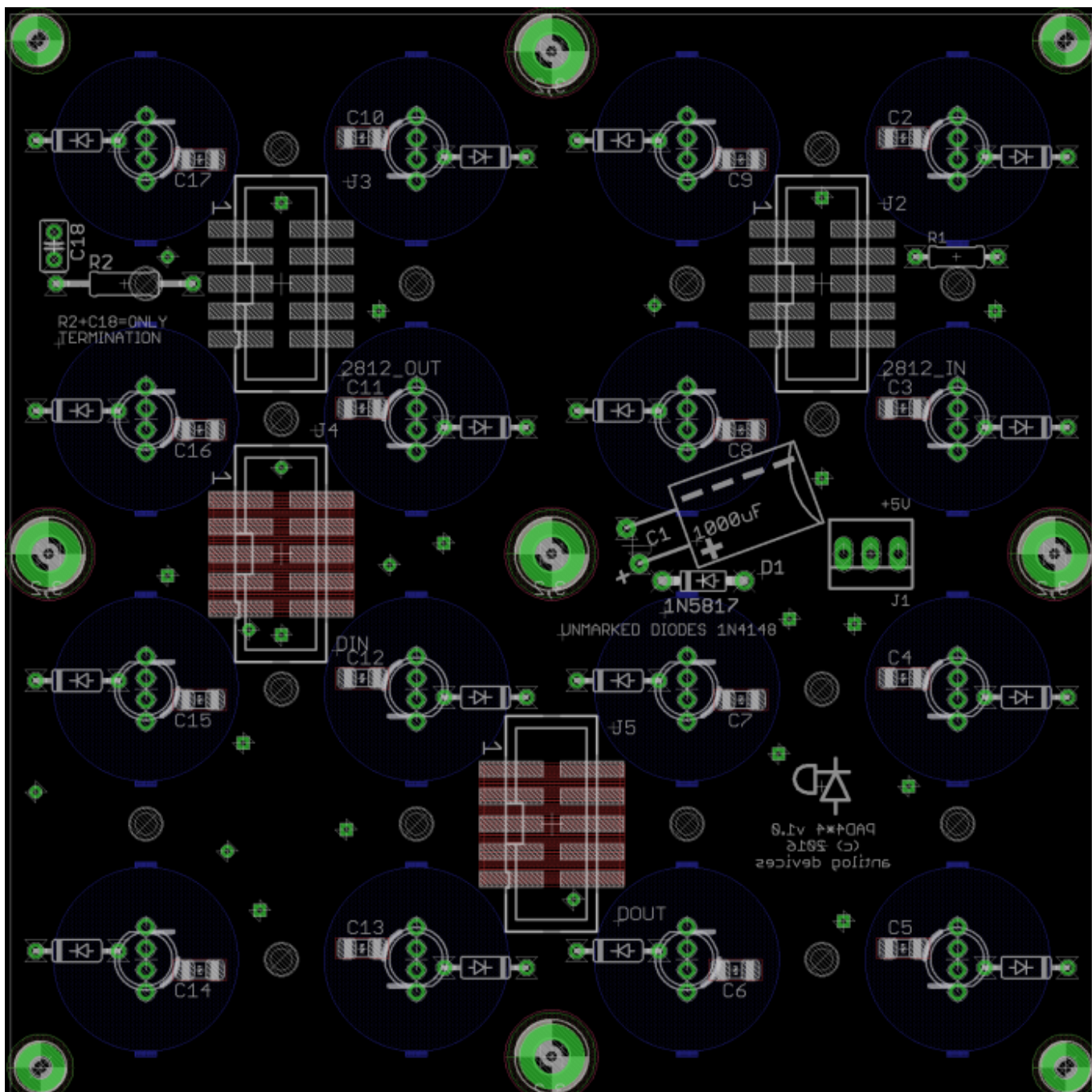


# PAD\_4\*4 module

A neat way to couple WS2812B programmable LEDs (pLEDs) with a silicone button pad (e.g. Sparkfun)

## Schematic

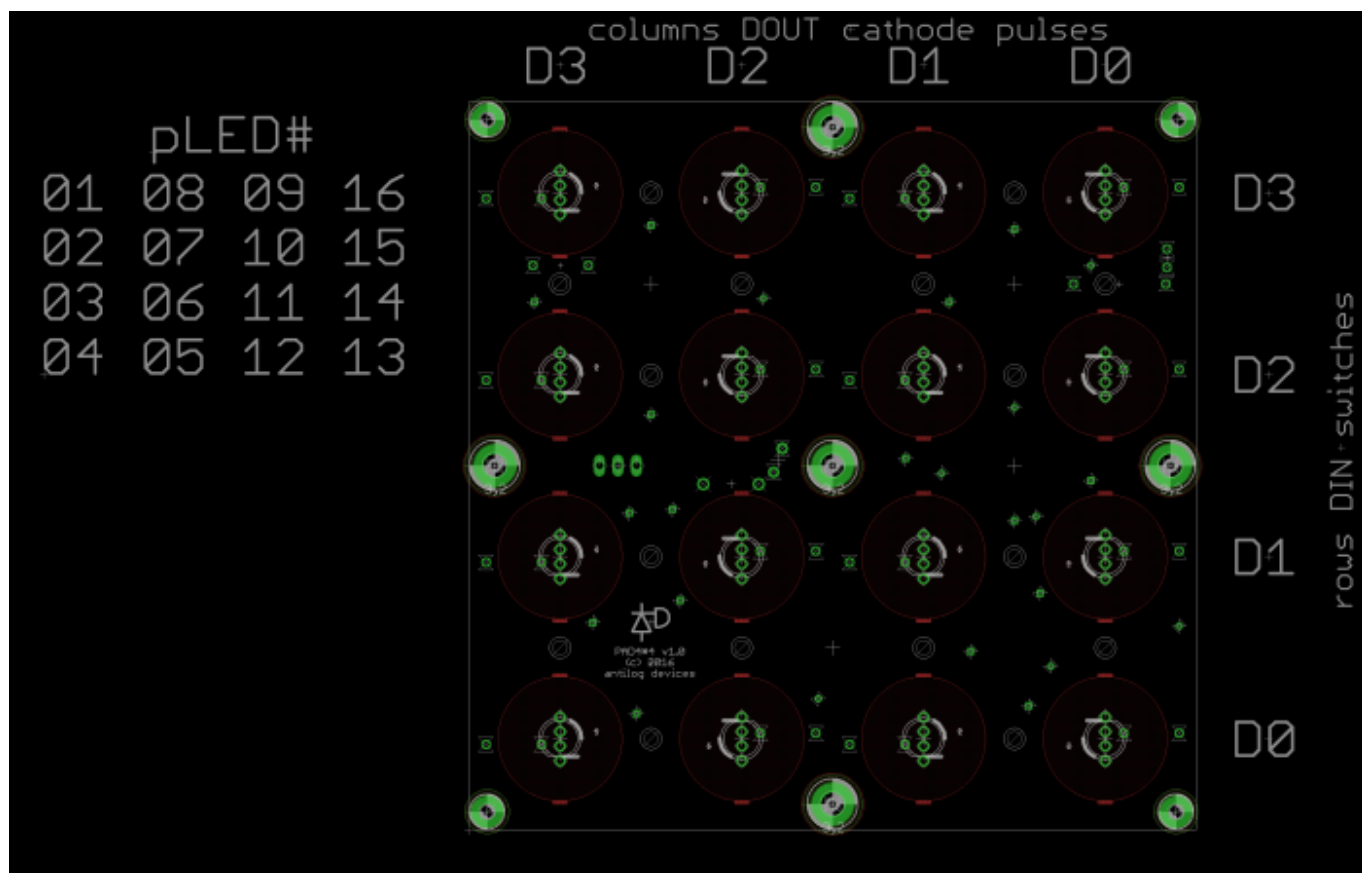


Rear view

Power input is +5V via a 3-pin 100mil connector (or Molex) and a Schottky diode. The value of electrolytic capacitor C1 is not critical.

The pLED chain enters via J2:pin 6 and resistor R1. The resistor should be replaced with a wire link for each additional module (i.e. only the first in the chain gets a resistor, the remainder stuffed with wire

links). The serial chain then follows a snake pattern to J3, where additional pLED modules may be connected. The RC (R2, C18) end termination shouldn't be necessary, but can be trialled should problems with signal reflection arise.



Front view

Switches are connected in a 4\*4 matrix with the given mapping. D0 refers to pin 10 of the IDC header (i.e. top right) for both DIN and DOUT.

## BOM v1.2

| Type              | Qty | Value | Package            | Parts   | Notes   |
|-------------------|-----|-------|--------------------|---|---|
| <b>resistors</b>  |     |       |                    |   |   |
|                   | 20  | 49k9  | 0204/7             | R1, R2, R4, R5, R6, R7, R8, R10, R11, R12, R13, R14, R16, R17, R18, R19, R20, R22, R23, R24 |   |
|                   | 4   | 30k   | 0204/7             | R3, R9, R15, R21  | nominal gain can be adjusted e.g. $(22k/49.9k) * 5V = 2.2V$ |
| <b>capacitors</b> |     |       |                    |   |   |
|                   | 4   | 10p   | 025x050            | C1, C3, C5, C7  |   |
|                   | 9   | 100n  | 025x050            | C10, C12, C13, C14, C15, C16, C17, C18, C20   | remove 1 if powering from Core                              |
|                   | 3   | 10u   | electrolytic 2,5-6 | C9, C11, C19  | remove 1 if powering from Core                              |

| Type             | Qty | Value    | Package        | Parts  | Notes   |
|------------------|-----|----------|----------------|--|---|
| <b>resistors</b> |     |          |                |  |   |
|                  | 4   | optional | 025×050        | C2, C4, C6, C8                               | can use another e.g. 10pF cap here for more filtering |
| <b>inductors</b> |     |          |                |  |   |
|                  | 2   | BEAD     | 5MM            | L1, L2                                       |   |
| <b>ICs</b>       |     |          |                |  |   |
|                  | 2   | MCP6002P | DIL08          | IC2, IC4                                     | sockets are recommended                               |
|                  | 2   | TL072P   | DIL08          | IC1, IC3                                     | sockets are recommended                               |
| <b>Vreg</b>      |     |          |                |  |   |
|                  | 1   | optional | TO-220         | VR1  | remove if powering from Core                          |
| <b>headers</b>   |     |          |                |  |   |
|                  | 7   |          | 1X02_SMALL     | JP1, JP2, JP3, JP4, JP5, JP6, JP7            | check board for headers as SIL strips of 3, 5 or 6    |
|                  | 8   |          | 1X03_SMALL     | JP8, JP9, JP10, JP11, JP12, JP13, JP14, JP15 |   |
|                  | 2   |          | 2*5 (shrouded) | J1, J2                                       |   |

## Versions

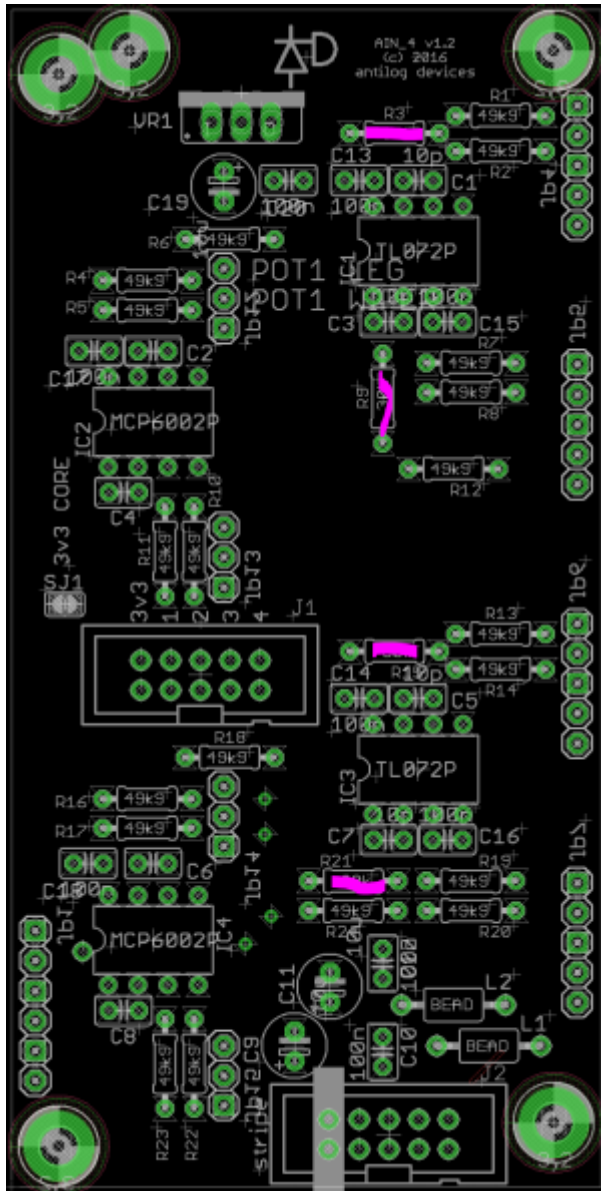
v1.2: first release.

## Assembly

Putting the board together is simple. As usual, start with the flattest components and work your way up.

### Resistors

- four 30k resistors marked in pink
- remainder are 49k9
- for best results, match R1/R2, R7/R8 (and so on), and R4/R5/R6, R10/R11/R12 (and so on).
- the value is less important than the minimum deviation.



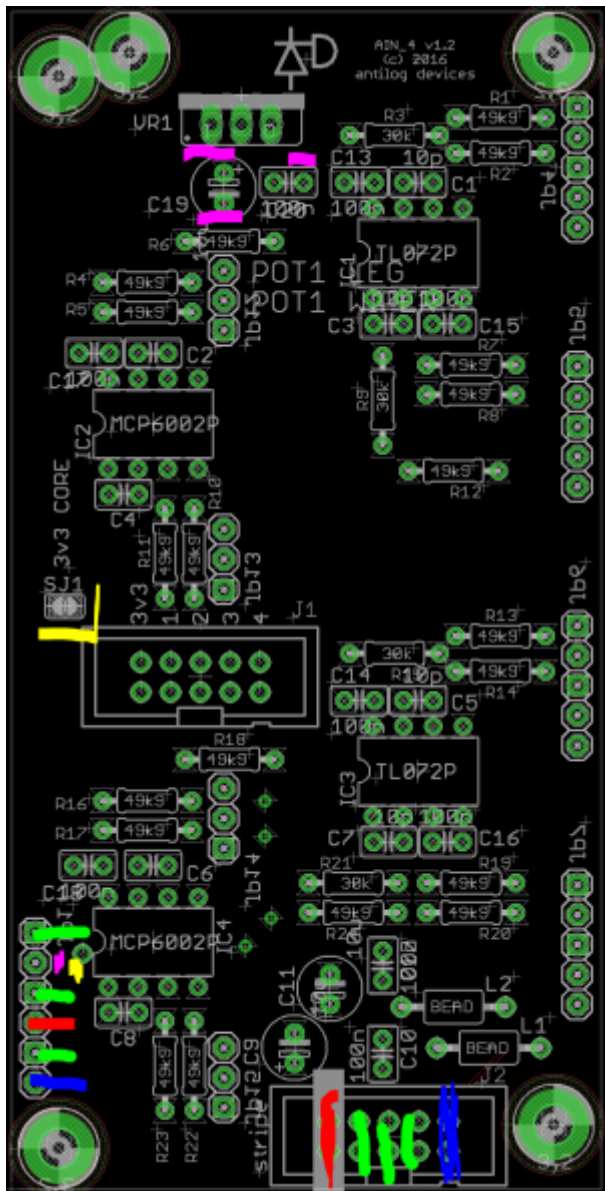
## Capacitors

- four 10p as marked in pink
- electrolytics in yellow
- blue are optional (i.e. probably unnecessary)
- remainder are 100n.



### Power

- J2 is a standard Eurorack header
- red = -12V
- blue = +12V
- green = 0V(ground)
- for Core power, bridge the solder jumper marked in yellow
- otherwise install the Vreg circuit in pink
- **IMPORTANT** only choose one of these 3v3 power options! Don't install the regulator if the solder jumper is bridged.



## Headers

For connection to a [Control Board](#), use pin headers placed on the opposite side as the rest of the components i.e. follow the silkscreen markings. For standalone use, you probably want header pins (or sockets, or even bare wires if you wish) on the same side as the remaining circuitry.

## Standalone use

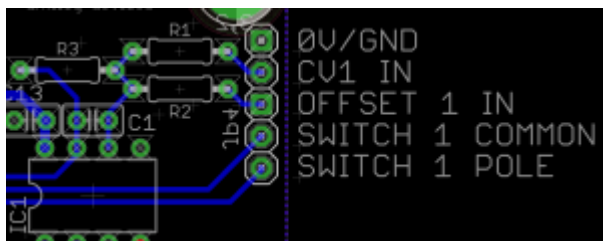
For simplest results, use the complementary [Control Board](#). Otherwise see below for header functions.

### Five pin header

- IN = CV input
- for scaling bipolar CVs, connect or switch into OFFSET (e.g. +5V; n.b. the offset should be

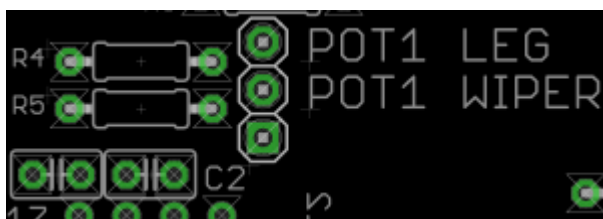
referenced to the common 0V)

- for 0-5V operation, leave SWITCH open; for 0-10V operation, jumper or switch in COMMON to POLE



### Three pin header

- with a 100k pot facing you, solder the left leg to 0V(ground)
- centre to WIPER
- right to LEG
- WIPER and LEG may be jumpered if pots aren't desired, but it is quite useful to have an attenuator to trim down variable CVs or even clip the second op amp for crunchy waveforms!



### Interconnection to Core

J1 carries the scaled CV to J5A or J5B of an STM32F4 Core module.

### License

Currently the design is © 2016 antilog devices with all rights reserved; all documentation is CC BY-NC-SA 3.0.

From: <https://midibox.org/dokuwiki/> - **MIDIbox**

Permanent link: [https://midibox.org/dokuwiki/doku.php?id=pad\\_4\\_4&rev=1470866694](https://midibox.org/dokuwiki/doku.php?id=pad_4_4&rev=1470866694)

Last update: **2016/08/10 22:04**

