

# Power Supplies

Find Here some schematics for DIY Power Supplies. It could help to power your midibox !

**! Be Aware of high voltages! - Stay Safe !**

## +5V DC / +9V DC / +12V DC



### 5V-9V-12V DC Regulated Power Supply - Current output : 1A

#### 5V Parts List

| Value      | Type      | Qty | Designation |
|------------|-----------|-----|-------------|
| LM7805     | VR        | 1   | U1          |
| 1N4007     | Diode     | 4   | D1,D2,D3,D4 |
| 220        | Resistor  | 1   | R1          |
| 22µF/25V   | Capa Elec | 1   | C2          |
| 2200µF/40V | Capa Elec | 1   | C1          |
| 9VDC 15VA  | Transfo   | 1   | TR          |

#### 9V Option

Replace:

- U1 > LM7809
- TR out> 12VDC
- R1 > 390ohms

#### 12V Option

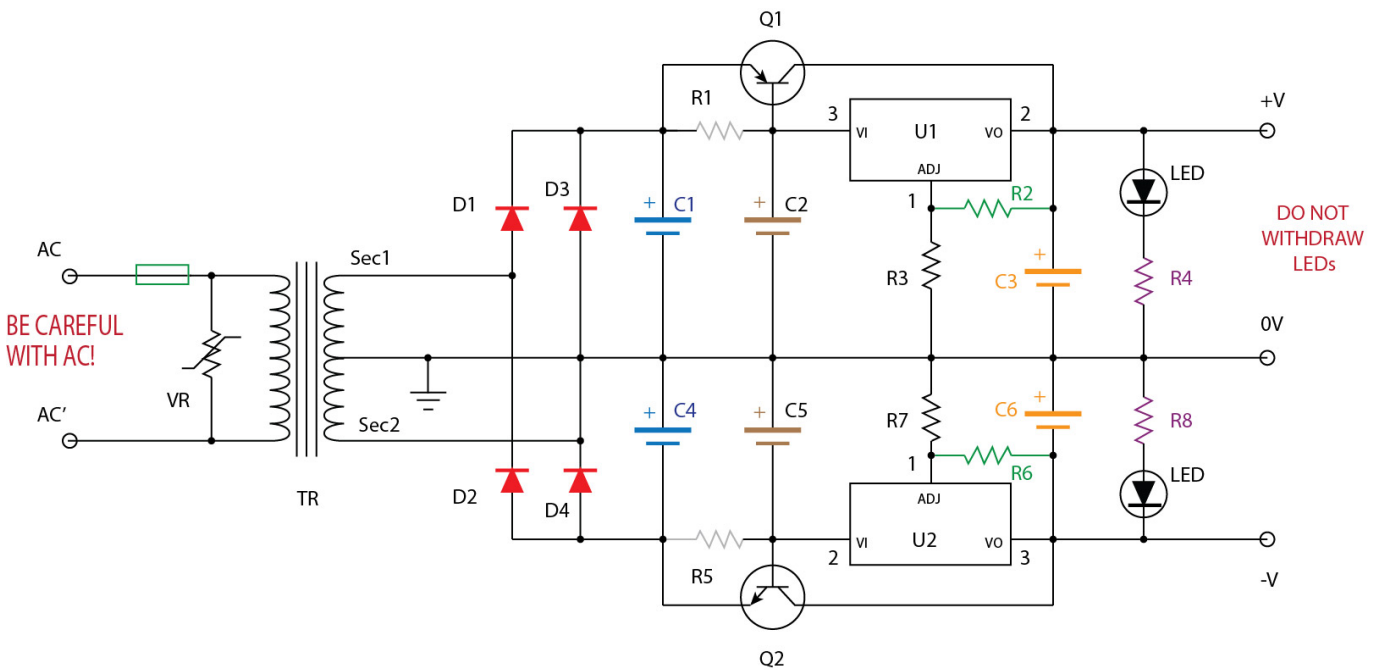
Replace:

- U1 > LM7812
- TR out> 12VDC
- R1 > 510ohms

## -12V/+12V DC

A designed has been purposed [There](#)

## -15V/+15V DC



+15/-15V Bipolar Regulated Power Supply - Current output : 4A

### Parts List

| Value          | Type      | Qty | Designation |
|----------------|-----------|-----|-------------|
| LM317T         | VR        | 1   | U1          |
| LM337T         | VR        | 1   | U2          |
| BDX54          | PNP       | 1   | Q1          |
| BDX53          | NPN       | 1   | Q2          |
| 10A04          | Diode     | 4   | D1,D2,D3,D4 |
| 10             | Resistor  | 2   | R1,R5       |
| 120            | Resistor  | 2   | R2,R6       |
| 820            | Resistor  | 2   | R4,R8       |
| 1320(1,1k+220) | Resistor  | 2   | R3,R7       |
| 1µF/25V        | Capa Elec | 2   | C2,C5       |
| 22µF/25V       | Capa Elec | 2   | C3,C6       |
| 10000µF/40V    | Capa Elec | 2   | C1,C4       |

| Value        | Type     | Qty | Designation |
|--------------|----------|-----|-------------|
| S05K400      | Varistor | 1   | VR          |
| 15VDCx2 90VA | Transfo  | 1   | TR          |

For Fine Voltage Tuning replace R3/R7 by a 2K Multi turns Trimpot.

From:

<https://midibox.org/dokuwiki/> - **MIDIbox**

Permanent link:

[https://midibox.org/dokuwiki/doku.php?id=power\\_supplies&rev=1465976851](https://midibox.org/dokuwiki/doku.php?id=power_supplies&rev=1465976851)

Last update: **2016/06/15 07:47**

