

# STELLAx4



## 4x 8Bit Soundchips/TIA's on a 10x10cm PCB,

controlled from a STM32F4 Microcontroller [dipcoref4](#), based on [Antichambre's TIA Module](#), with [AD9833's](#) as External programmable Clock, the Frequency-range is expanded...

**The Board acts a Motherboard**, for

- 4x Soundchip... AND:

also like the [stm32f4\\_module](#) it provides:

- Midi-IO - 1x IN, 1x OUT > 3,5Jacks/TRS
- $\mu$ SD-Card - 2 Save Patches
- $\mu$ Controller-Socket - 2 Plug the [dipcore\\_f4](#) in, ask [antichambre](#) to get one!
- J19>[AoutNG](#) - to connect VCF or VCAs...
- J8/9>[DOUT](#) & [DIN](#) - 4 the UI
- J15 (JLCD1) which handle from Stock 4x SPI-Displays (SSD1306), - 4 the UI
- J1>chain a nother STELLAx4 as "SLAVE" to it, to expand polyphony

ready for Pick and Place



-all SMD-Parts are on one SIDE and are presoldered..

## Features

- \* Summed or Individual Audio-Outs, selectable via normal Jumpers
- \* NTSC or PAL > select via SMD-Solder-Jumper
- \* User-Interface is C-Language-Programmable

## Hardware Requirements

- [dipcoref4](#)
- 4 x [TIA/STELLA](#) [PAL or NTSC...]
- Soldering Iron - with a Dip that can Handle Thruhole-Parts, solder Paste...
- 5V from Mini-USB-Plug, or 5V at a 2Pin-Header connected to example a Eurorack Power Source (+5VDC!)
- dont forget Midi TRS Cables

## Schematic

Rev.A

[stellax4-schematic.pdf](#)



Rev.B  
[stellax4-schematic-b.pdf](#)

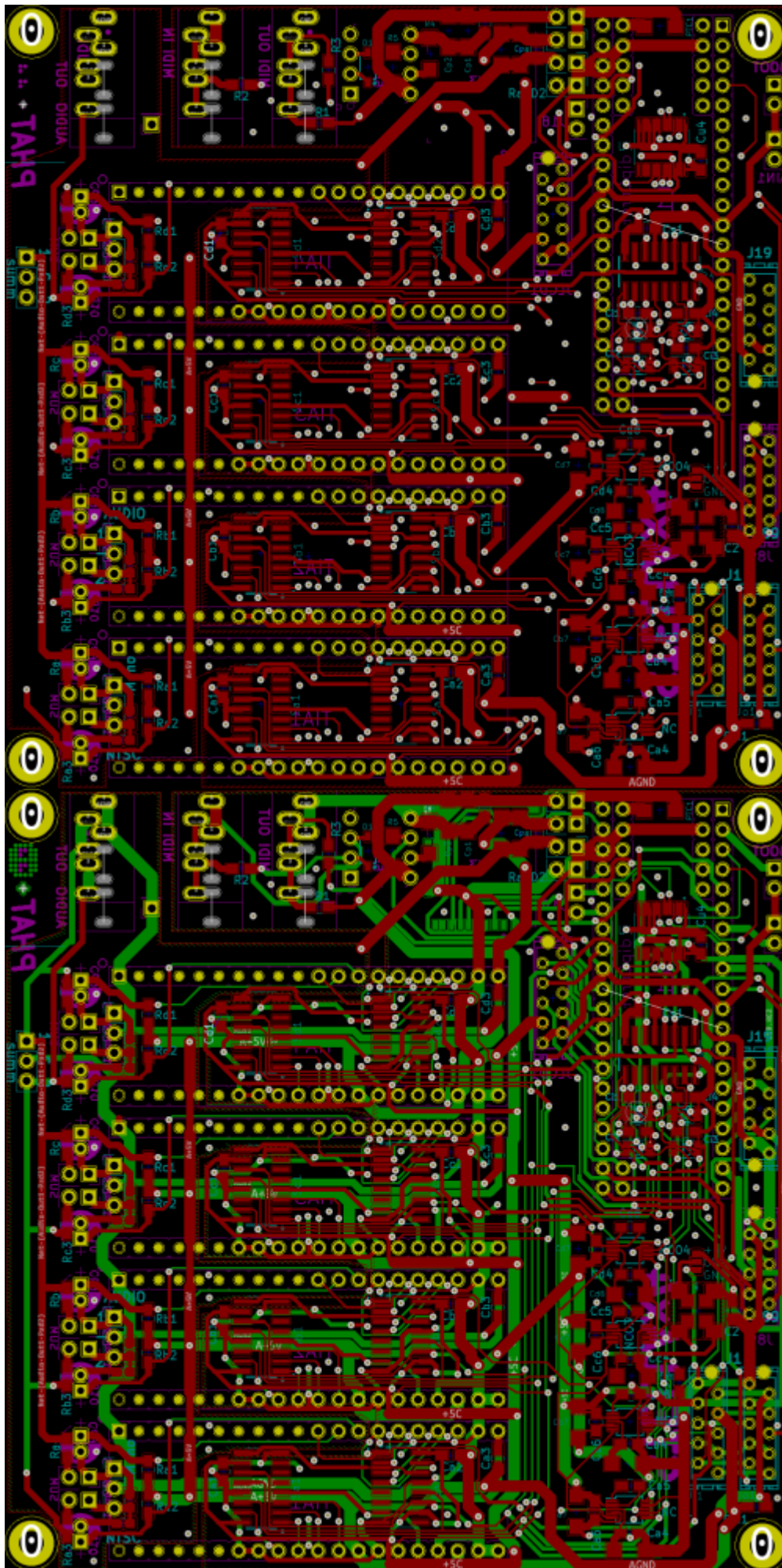






Rev.B





# BOM LCSC

these are the parts which are presoldered by the Pick and Place Machine

| Comment       | Designator  | Footprint              | LCSC Part Number |
|---------------|---|------------------------|------------------|
| 100nF         | Ca1,Cb1,Cc1,Cs1,Cd1,Ca2,Cb2,Cc2,C2,Cd2,Ca3,Cb3,Cc3,Cp3,Cpa3,Cd3,Ca4,Cb4,Cc4,Cd4,Cu4,Ca5,Cb5,Cc5,Cd5,Ca6,Cb6,Cc6,Cd6 | 0805                   | C49678           |
| 47uF          | Cp1,Cpa1,Cp2,Cpa2,Ca7,Cb7,Cc7,Cd7   | 1206                   | C96123           |
| 10uF          | Ca8,Cb8,Cc8,Cd8   | 1206                   | C13585           |
| 1N4148W       | D1  | SOD123                 | C81598           |
| 74HC2G32      | IC1,IC2,IC3,IC4   | VSSOP-8_2.3x2mm_P0.5mm | C91874           |
| AD9833BRMZ    | NCO1,NCO2,NCO3,NCO4   | MSOP-10_3x3mm_P0.5mm   | C9652            |
| Oscillator    | OSC1  | 25x20-4Pole-SMD        | C90621           |
| 220           | R1,R2,R3  | 1206                   | C17958           |
| 4K7           | R4  | 1206                   | C17936           |
| 1K            | R5  | 1206                   | C4410            |
| 1K8           | Ra1,Rb1,Rc1,Rd1,Ra2,Rb2,Rc2,Rd2   | 0805                   | C17398           |
| 100K          | "Ra3,Rb3,Rc3,Rd3,Ra4,Rb4,Rc4,Rd4"   | 0805                   | C17407           |
| 74HC595       | Sa1,Sb1,Sc1,Sd1,S1,Sa2,Sb2,Sc2,Sd2  | SOIC-16                | C5947            |
| 74HC541-TSSOP | U4  | TSSOP20                | C406865          |

# BOM Mouser

30,39€ exlc shipping > so better order other stuff too, over 50€ there is free shipping!

**Parts for Handsolder:**[copy list below, and paste in this link](#)

- 647-UFG1H100MDM|8
- 649-68000-220HLF|3
- 151-8010-E|10
- 571-1-2178710-0|4
- 490-SJ1-3535NG|3
- 575-1104764041001000|4
- 200-CES12001TS|3
- 512-6N138M|1
- 575-1104730841001000|1
- 798-DM3AT-SF-PEJM5|1
- 474-COM-15107|1

for prototyping i ordered:

**490-SJ1-3535NG-GR** instead of **490-SJ1-3535NG** because it is out of stock - so **GREEN sockets** for now!

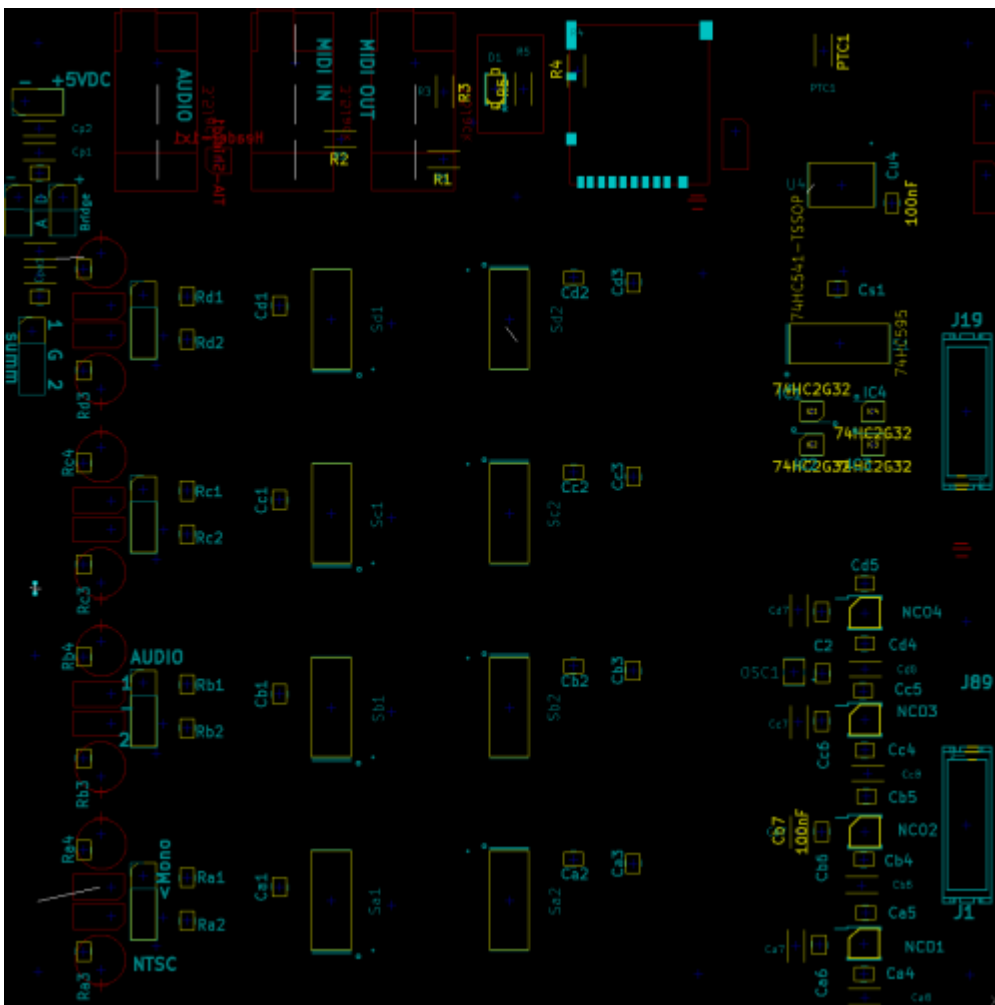
Cable-Connectors for UserInterface and AOUT-Module you will need also:

- 571-1-2178712-0|8
- + Ribbon Cables for example:
- 710-63911015521CAB|1

| Comment    | Designator                   | Mouser Part Nr                    |   |
|------------|------------------------------|-----------------------------------|---|
| 10uF-Audio | Ca9Cb9Cc9Cd9Ca10Cb10Cc10Cd10 | 647-UFG1H100MDM                   | 8 |
| 220        | R1R2R3                       | 32                                |   |
| 3.5Jack    | Midi-I-1Midi-O-1Audio-Out1   | 490-SJ1-3535NG                    | 3 |
| 6N138      | U2                           | 512-6N138M & 575-1104730841001000 | 1 |

| Comment               | Designator                      | Mouser Part Nr                |    |
|-----------------------|---------------------------------|-------------------------------|----|
| DIPCOREF4_52P         | U1                              | 200-CES12001TS                | 3  |
| Header-1x2-JUMPER     | SumA-SumD2SumB2RailD2RailA2     | 649-68000-220HLF + 151-8010-E | 12 |
| Header-1x3            | AUDIO1SUMMED1AUDIO2AUDIO3AUDIO4 | 649-68000-220HLF              | 1  |
| Header-2x5-Micromatch | JLCD1,Jo1,ji1,J19,J89           | 571-1-2178710-0               | 5  |
| Oscillator-5032u7050  | OSC1                            | 732-5032CC25.0HJGA3           | 1  |
| PinHead-1x2           | JBOOT1AIN1J18                   | 649-68000-220HLF              | 1  |
| TIA                   | TIA1TIA2TIA3TIA4                | 575-1104764041001000          | 4  |
| uSD_DM3ATDM3AT        | U3                              | 798-DM3AT-SF-PEJM5            | 1  |

## PART Locations



## To Do

- waiting for christmas
- UI-PCBs
- Debugging First Version

# Community users working on it

- **Phatline** = PCB & Schematic, UI-Programming, Documentation...
- **antichambre** = Schematic, Porting 8>32Bit, Programming...

Just let a Private message on the forum to user already involved.

# Community users interested on it

- **sajtron** = Chip composer who maybe wanna buy one...

From:

<https://midibox.org/dokuwiki/> - **MIDIbox**

Permanent link:

<https://midibox.org/dokuwiki/doku.php?id=stellax4&rev=1617741173>

Last update: **2021/04/06 20:32**

